

AWARDS OF SCIENCE AND MATHS EXCELLENCE 2014 - HOW THEY WORK

If your school is a DPSM registered school you can apply for an Award of Science and Maths Excellence. If you are unsure if your school is already registered, please check by submitting your roll number on <https://www.primaryscience.ie/schoolstatus>

While you submit your intention to apply for an Award online in January 2014, you can commence your preparation for the Award as soon as the school year starts. If you have any queries please contact us at primaryscience@sfi.ie

>> TO REGISTER YOUR INTENTION TO APPLY FOR AN AWARD PLEASE LOG ONTO WWW.PRIMARYSCIENCE.IE FROM JANUARY 7TH TO MARCH 21ST 2014

>> YOUR LOG BOOK AND APPLICATION FORM MUST BE SUBMITTED BY FRIDAY MAY 16TH 2014

So what do you need to do?

Keep a Discovery Log

Your Discovery Log is a key aspect of your application for an Award. The Log should provide all the evidence the judging panel needs to demonstrate that your school meets all of the criteria for an Award of Science & Maths Excellence.

NB: Discovery Logs must be received in full on the submission date – there will be no opportunity to re-submit or substantiate evidence once the application has been made. If evidence is not apparent, an Award cannot be achieved.

- Step 1 - Participate in the Greenwave project (www.greenwave.ie)
- Step 2 - Complete a minimum of two hands-on activities, at least one relating to the Energy and Forces strand and at least one relating to the Materials strand. Please also show clearly how you integrated maths into these activities.
- Step 3 - Visit a DPSM Centre or invite a scientist/engineer into your school.
- Step 4 - Attend or hold a science event.
- Step 5 - Provide evidence of the children using technology in the classroom (other than Greenwave or an activity in previous Steps 1-4).

PLEASE NOTE: Written work by children (as opposed to just photos and teachers accounts) MUST be included in the log book. If the children type text, this should be clearly labelled as their work.

If children are keeping individual Discovery Logs, a small number of samples of each can be submitted along with the overall School Discovery Log that covers all the work required for the Award.

Don't be afraid to include things that didn't work in your log book as understanding what went wrong is a very important aspect of science and maths.

Step 1 - Greenwave and Maths

Watch for the signs of spring in your area by observing a minimum of one of the six common species as listed on the www.greenwave.ie website and making at least one weather observation in your area. You must provide evidence that you:



Have registered and submitted at least one sighting on the Greenwave website at www.greenwave.ie. (PLEASE LOG ONTO WWW.GREENWAVE.IE. PRINT OFF YOUR DASHBOARD WITH THE DETAILS OF SPECIES UPLOADED AND INCLUDE IN LOG BOOK)



Have used a thermometer, rain gauge or anemometer to investigate weather in your area. Instructions for all of these activities are available at www.greenwave.ie.



Have used maths as part of Greenwave. This means actual maths operations. Rather than simply using a thermometer to measure temperature, it means working with the data gathered. Eg. making a graph or bar chart, comparing temperatures or calculating an average temperature for each week and/or month.

Step 2 - Prescribed activities and Maths

This year schools applying for an award must provide evidence that more than one class in the school have been involved in the following and give one example of how you integrated maths into each of these activities:

- 1 hands-on investigation relating to the Energy and Forces strand of the Science curriculum.
- 1 hands-on investigation relating to the Materials strand of the Science curriculum.
- Please include examples and evidence of how maths was used as part of this science work. Activities can be found here <http://www.primaryscience.ie/activitysearch>.
- Feel free to use any relevant resources to which you have access.



Step 3 - DPSM Discover Centre or Science Speaker/Engineer

- Either **A) Visit an accredited DPSM Discover Science Centre**
(<http://www.primaryscience.ie/discovercentres>)
- or **B) Invite a Science Speaker or Engineer to your school**
(e.g. parent, garda, nurse, doctor, college students, voluntary groups etc.
Anyone who uses science, technology, engineering or maths in their work)

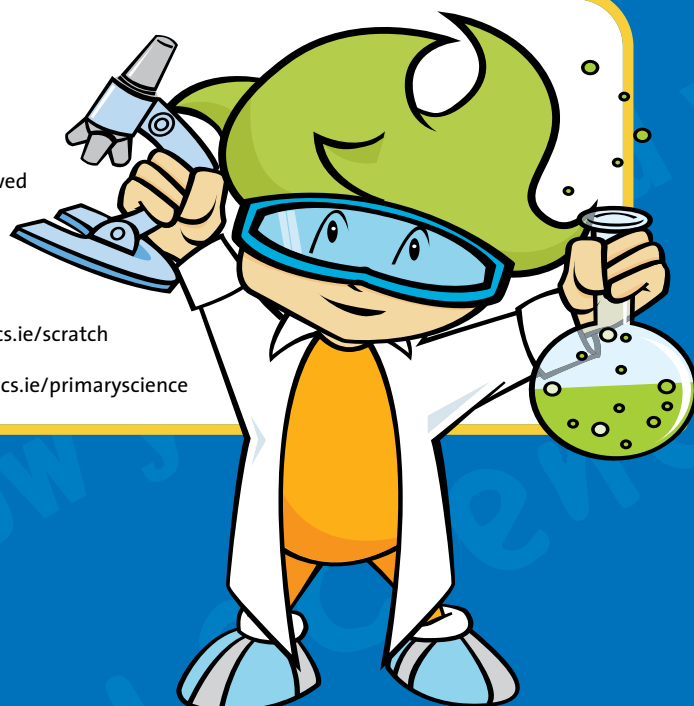
Step 4 - Attend or hold a science event

Please provide photographic evidence or children's written account of a science event that you held or attended. For example if you:

- Held a science open day or evening to display your work for the school, parents or the wider community.
- Attended a Maths Week event during October 2013
- Ran or attended a Science Week event during November 2013.
- Participated in a joint science event with another school where students displayed their work.
- Attended an Engineers Week event in February 2014.
- Took part in or attended the Young Scientist and Technology Exhibition 2014.

Step 5 - Technology

- Provide evidence of how the children used technology (other than Greenwave or other activity used as part of another step)
- Have a website or blog where your science and maths work can be viewed
- Use IT to record or analyse data e.g a spreadsheet or graphs
- Submit your logbook in a digital format
- Participate in the Irish Computer Society Scratch programme at www.ics.ie/scratch
- You can find some other ideas for technology related projects at www.ics.ie/primaryscience



Remember, you must provide evidence for all five steps in your Discovery Log. You can submit your intention to apply for an award from January 7th to March 21st 2014. All Discovery logs must be in our office by close of business Friday May 16th 2014.